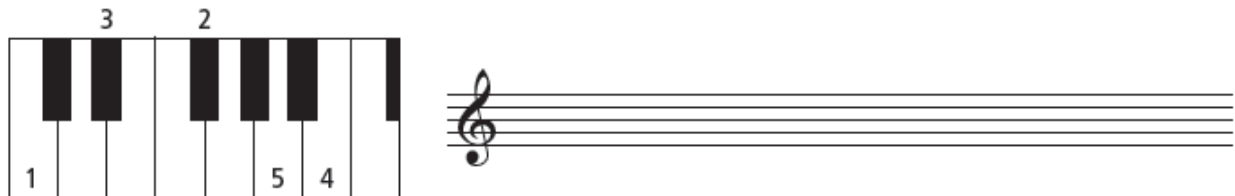


NOTATION EXERCISE 5

Question 1 (2½ marks)

Identify the notes marked 1, 2 etc. on the diagram of the keyboard and write them as crotchets on the staff. Label your notes with the corresponding numbers.



Question 2 (2½ marks)

Match the words with the correct rhythmic patterns. Write your answers as 2(c) etc. in the space provided.

- 1 Lavender's blue, dilly, dilly, Lavender's green
- 2 Little Jack Horner sat in a corner
- 3 Where, oh where has my little dog gone?
- 4 Little Bo-Peep has lost her sheep
- 5 See-saw. Margery Daw



Answers:

Question 3 (5 marks)

Complete the bars with whatever notes and rests are required, *in the order stated*.

A musical staff in treble clef with a common time signature (C). The staff is divided into five bars by double bar lines. Below each bar is an instruction: '1 rest and a note', '1 note', '1 rest', '4 notes', and '3 notes and a rest'. The time signatures for the bars are: common time, 2/4, 3/4, 2/4, and 3/4.

Question 4 (5 marks)

Add signs to the music below to show that

- a the first two notes are played short
- b the last note in bar 2 is stressed
- c the quavers in bar 2 are played smoothly
- d bar 1 is played loudly
- e the music gets softer in bar 3

A musical staff in treble clef with a common time signature (C). The staff contains four bars of music. Bar 1 has two quarter notes. Bar 2 has a quarter note followed by two eighth notes. Bar 3 has a quarter note followed by two eighth notes. Bar 4 has a half note.

Question 5 (5 marks)

There are 10 mistakes in the music below. Rewrite it correctly on the staff provided.

A musical staff in treble clef with a 2/4 time signature. The staff contains a piece of music with several errors: a slur over the first two notes, a fermata over the first note, a dynamic hairpin (crescendo) starting under the first note, an accent (>) over the second note, a fermata over the third note, a slur over the last two notes, and a fermata over the last note. Below this staff is a blank musical staff for the student to rewrite the music correctly.